

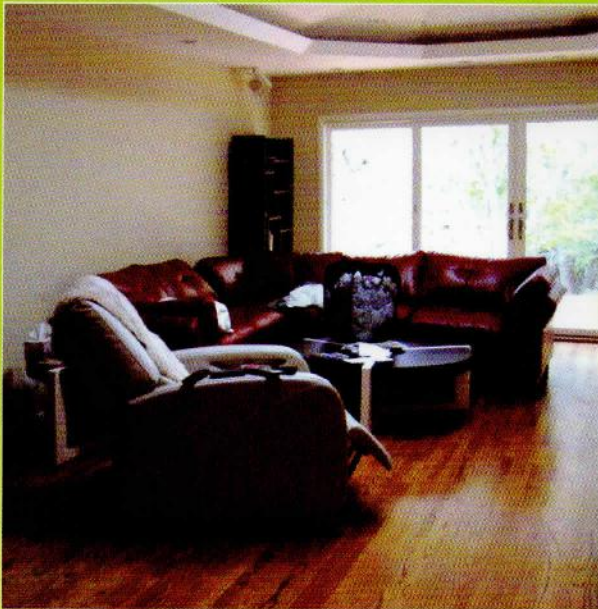


# atmosphere

1BHK & 2BHK Condominiums



live with nature...



## Specifications

- **STRUCTURE** : RCC Framed Earthquake Resistant Structure.
- **WALLS** : 6" External & 4" internal.
- **PLASTER** : External - Sponge finish  
Internal - Neeru Finish
- **FLOORING** : Rooms - 2' x 2' Vitrified flooring  
Terrace & Toilets - Anti skid flooring
- **DADO** : Kitchen - Colour Glazed tiles upto lintel level.  
Toilets - Colour Glazed tiles upto lintel level.
- **KITCHEN PLATFORM** : Granite Top with Stainless Steel Sink.
- **WINDOWS** : Powder coated aluminium sliding windows.
- **PLUMBING** : Concealed plumbing with premium C P fitting  
Provision for washing machine in dry terrace.
- **ELECTRICALS** : Concealed electrification for whole unit.  
Ample points in rooms for lights, fans and charging plugs.  
Power point for refrigerator in kitchen.  
Light and boiler points in toilet units.
- **COLOUR** : Internal Walls : Oil bound/Dry Distemper.  
External Walls: Acrylic/Cement paints.

## Special Amenities

- Specially Designed multiactivity hall/club house.
- GENSET back -up for common areas and lifts.
- Common toilets for drivers and servants in the Parking area.
- Multilevel CAR Parking.
- Specially designed Atriums.
- Concrete/Paved Road.
- Professional Landscaping.
- Specially designed Main Entrance gate.

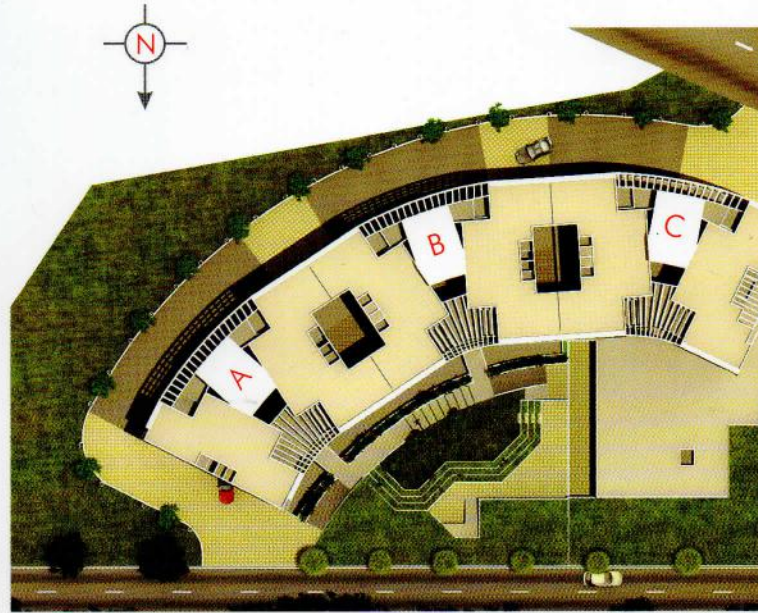


# Typical Odd Floor Plan (B - Wing)



# Typical Even Floor Plan (B - Wing)





## Credits

### STRUCTURAL CONSULTANT

Sunil Mutalik & Associates  
Phone : 24476705

### ARCHITECTS

Vinod Dhusia Architects  
Phone : 25888333  
&  
A Design Studio  
Phone : 32938163

### LEGAL ADVISOR

Adv. Anup Mehta  
Phone : 94225 64731



**J R S ASSOCIATES**

Site : Sr. No. 29/5&6, Ambegaon Bk., Opp. Abhinav Law College,  
Katraj - Dehu Road Bypass, Pune

**CONTACT : 9822899966**

Head Off. : 1&2, Sanskruti Appt., 698, Maharshi Nagar,  
Near Shiv Shankar Karyalay, Pune 411 037.

Telefax.: 020 - 2426 7123

E-mail : atmosphere.jrs@gmail.com